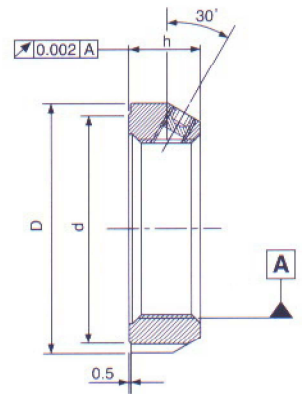
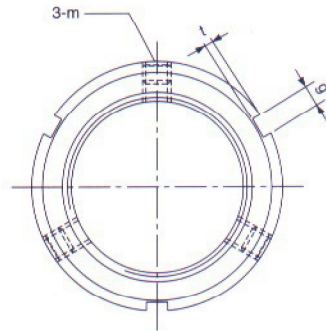


MF SERIES-30° LOCKING

30° 鎖定

- Material — SCM440
- Hardness — HRC 28-32
- Precision — ISO 4H

- 材質 SCM440
- 硬度 HRC28-32
- 精度 ISO 4H



TYPE & Pitch	Dimensions					Axial Load Static kN	Loosening Torque kg-cm	Screw Torque	
	D	h	g	t	d			DIN	Max kg-cm
MF12 x 1.0P	30	14	4	2	25	40	200	M5	48
MF15 x 1.0P	34	16			26	60	250		
MF17 x 1.0P	36	18	5	2	28	70	300	M6	80
MF20 x 1.0P	38				32	90	400		
MF20 x 1.5P					36	120	800		
MF25 x 1.5P	42				43	145	1400		
MF30 x 1.5P	48				48	170	1800		
MF35 x 1.5P	53				52	190	2200		
MF40 x 1.5P	58	20	6	2.5	59	220	2500	M8	190
MF45 x 1.5P	65				64	250	2700		
MF50 x 1.5P	70				68	310	2900		
MF55 x 2.0P	75	22	7	3	73	350	3100	M10	360
MF60 x 2.0P	80				78	400	3200		
MF65 x 2.0P	85				84	450	3400		
MF70 x 2.0P	92				90	480	3600		
MF75 x 2.0P	98	24	8	3.5	96	580	3800	M8	190
MF80 x 2.0P	105				104	620	4000		
MF85 x 2.0P	112				108	680	4500		
MF90 x 2.0P	118	26	10	4	118	740	5000	M10	360
MF100 x 2.0P	128				132	800	5500		
MF110 x 2.0P	145	30	12	5	142	860	6000	M10	360
MF120 x 2.0P	155				152	920	6500		
MF130 x 2.0P	165				165	980	7000		
MF140 x 2.0P	180	32	12	5	180	1050	7500	M10	360
MF150 x 2.0P	195				190	1200	8000		
MF160 x 3.0P	210	34	12	5	200	1260	8500	M10	360
MF170 x 3.0P	220				205	1370	9000		
MF180 x 3.0P	230				220	1430	9500		
MF190 x 3.0P	240	36	12	5	230	1500	9900	M10	360
MF200 x 3.0P	250				230	1500	9900		

When ordering above products, please refer to the TYPE NO.

- If left hand threading required, please notify "L" after the TYPE NO. For example:MF25-L
- If inch threading required, please notify "U20" (20 threads per inch). For example:MF25-U20
- MR, MKR series work in the same way.

5 No stocks of above series available, please send your order in advance.